

Pyrolave in Wonderland

Wonderland is the final residential stage of the iconic urban redevelopment project by Frasers Property of Central Park, a precinct of nearly six hectares of inner-city Sydney encompassing residential buildings, parks, community facilities, and improved city infrastructure.

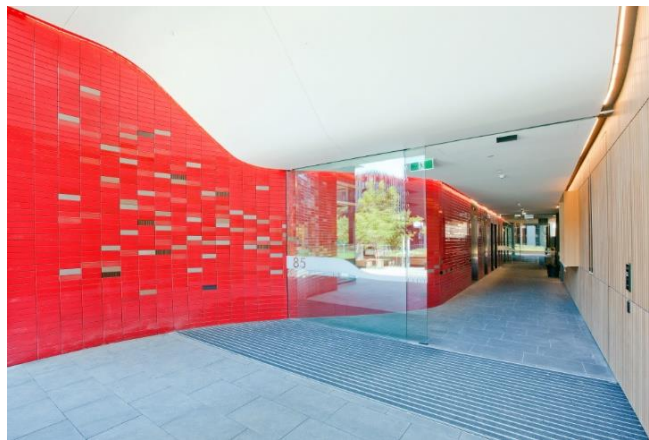
The focus on environmental sustainability throughout the \$2 billion redevelopment project is exemplified most notably in the design by French Architect Jean Nouvel of the award-winning One Central Park's Heliostat, a cantilevered platform suspended from the 28th floor which captures and redirects sunlight to otherwise shaded parts of the precinct.

Architectural firm Francis-Jones Morehen-Thorp (FJMT) undertook the design for Wonderland, a mid-rise park-side apartment building at the precinct's south-eastern corner, completed in early 2019.



Glazed lava curved walls

Pyrolave's glazed tiles were selected as the finish for the curved walls of Wonderland's three entrance foyers giving access to the building.



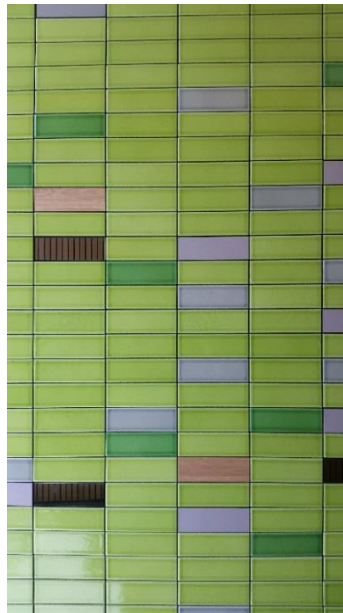
Several different tile sizes were incorporated within the design, although the majority of tiles were 230mm x76mm. To achieve the curvaceous shape of the wall, Pyrolave was able to satisfy the architect's desire for seamless corners by manufacturing "L" shaped tiles of different lengths.



A colour palette was selected for each of the red, green, and yellow foyers. In total, nine different colours were used.



Interspersed randomly among the glazed lava tiles was a small number of tiles of other materials including timber, aluminium, and glass.



Instead of using normal grout, an open jointed installation was required. The high degree of precision needed for this type of finish was able to be achieved as a result of Pyrolave's attention to detail in the production of the tiles.



In all, some 130 square metres of tiles were produced.

